

Lehigh Tympan

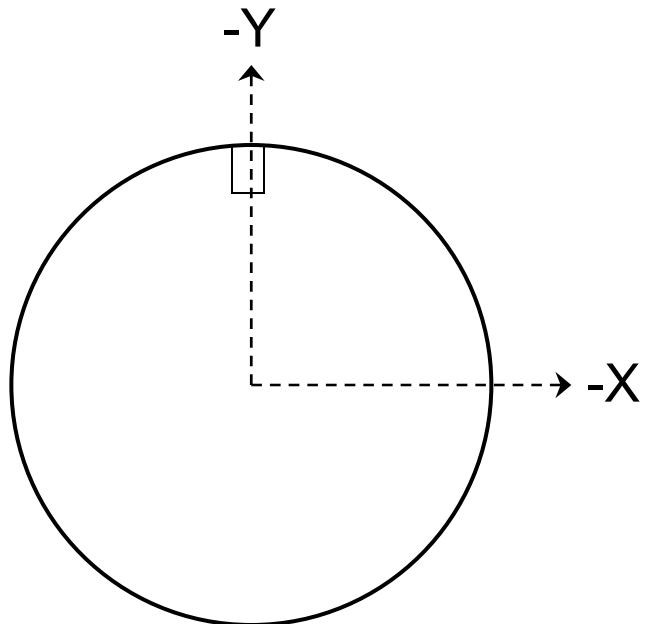
XRF summary, wt.%

Component	Zn	Pb	Ag	Sn	Sb	In	Cd	Au	Fe	Cu	Total
lehigh tympan 001	30.8	0.6	0.014	0.314	0.003					59.5	91.2
lehigh tympan 002	30.9	0.5	0.013	0.387	0.004					61.7	93.5

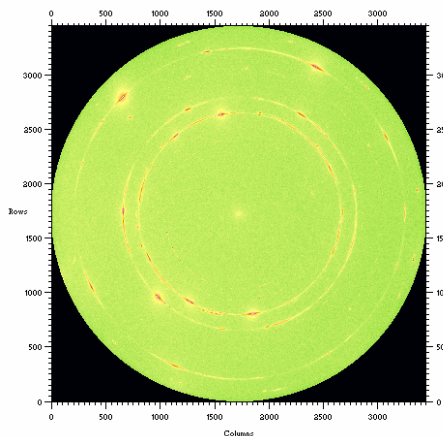
XRF error is $\pm 10\%$ of reported value for trace elements, ± 1.05 wt.% for Zn.

NOTE: Coordinate system used to define measurement points in subsequent data is oriented such that the primary synchrotron X-ray beam direction is into the paper, normal to the X and Y directions.

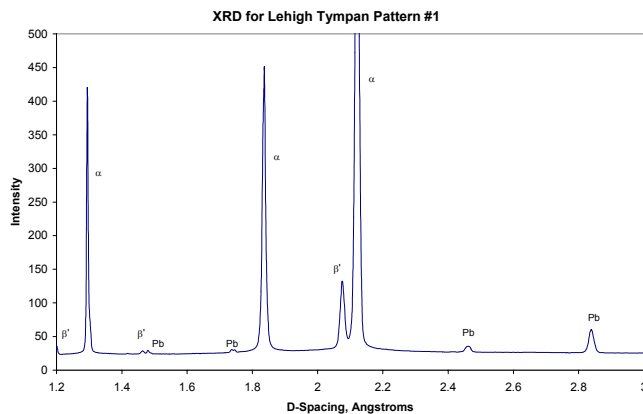
Tympan oriented vertically such tympan fixing slot (illustrated at right) is in the $-Y$ direction. 20° face is toward beam.



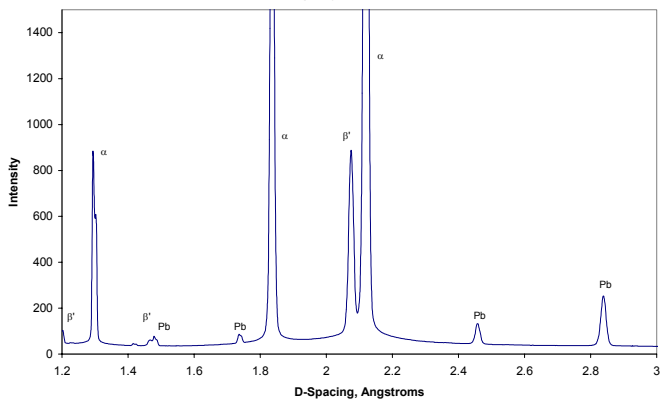
Astrolabe Lehigh Tympan (20°/24°)



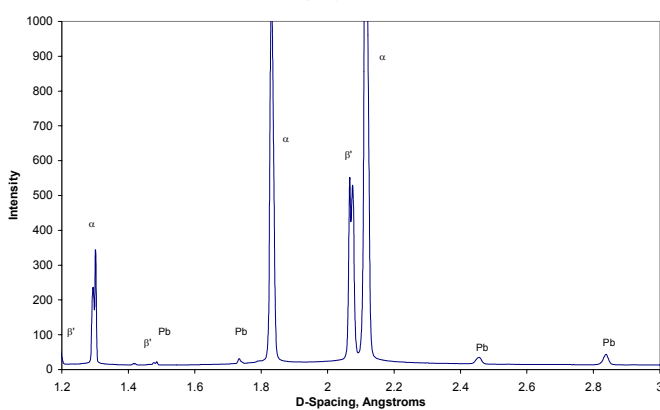
X = 2 mm, Y = - 6 mm



XRD for Lehigh Tympan Pattern #2



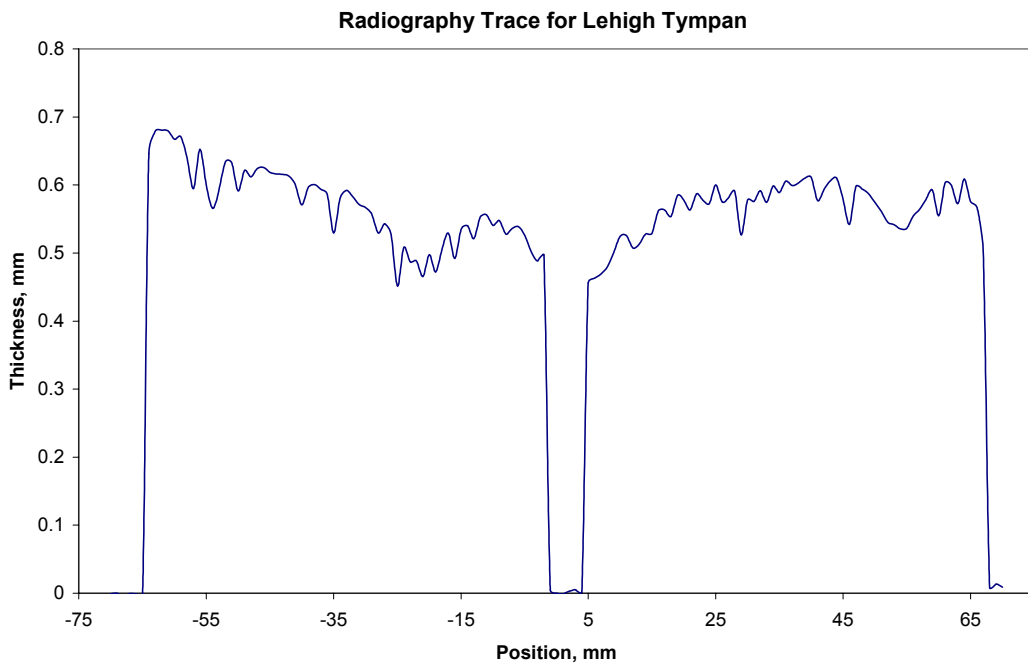
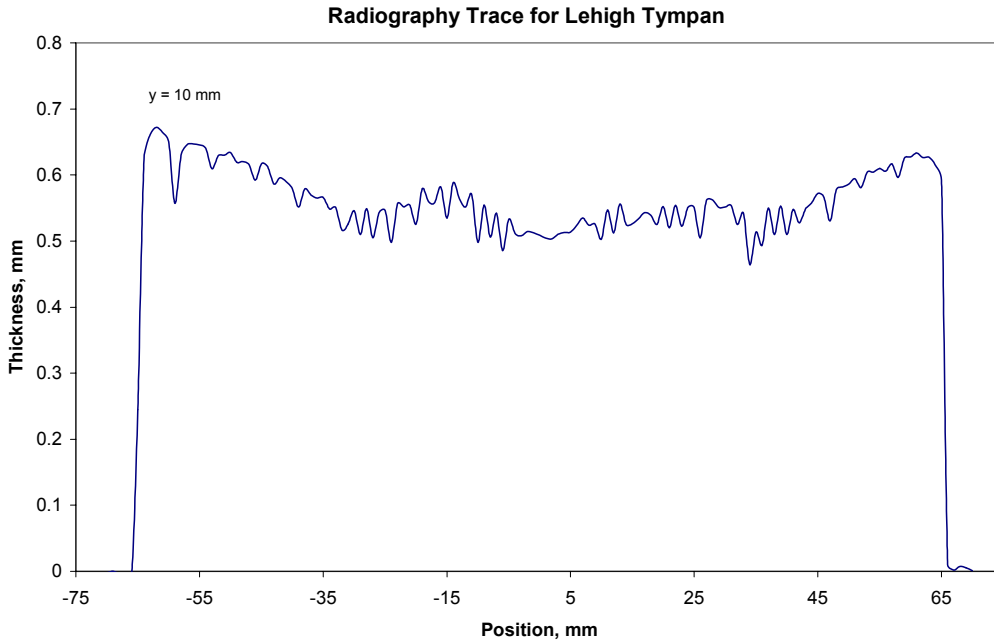
XRD for Lehigh Tympan Pattern #3



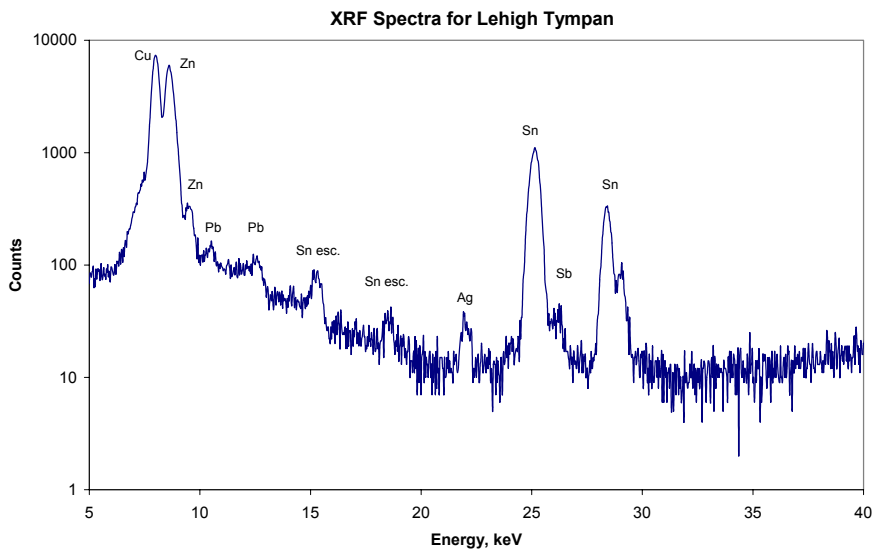
X = - 2 mm, Y = 6 mm

Scanned to complete rings

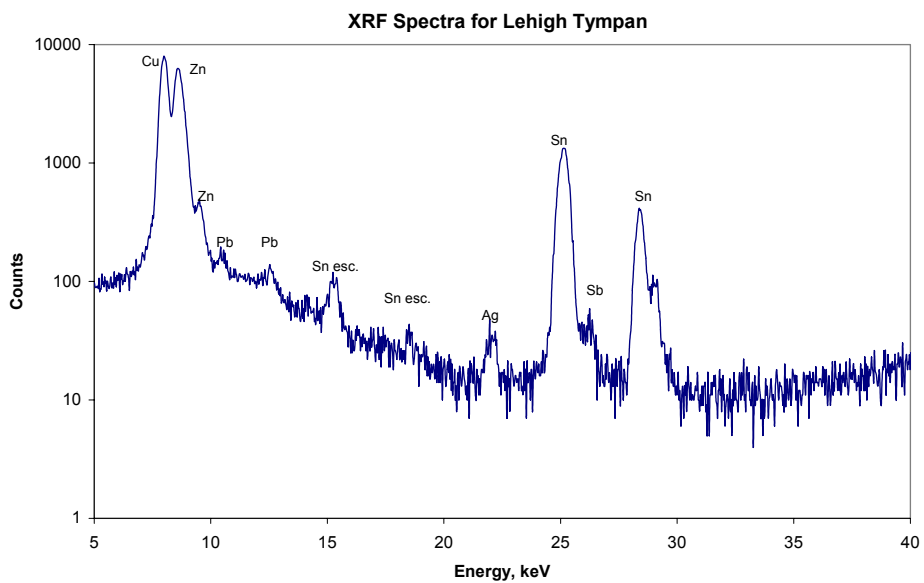
Astrolabe Lehigh Tympan (20°/24°)



Astrolabe Lehigh Tympan (20°/24°)



X = 2 mm, Y = - 6 mm



X = - 2 mm, Y = 6 mm